

SOUTH BRANCH ORV MAP

DISCLAIMER-South Branch Township

United States Forest Service Roads/County Roads

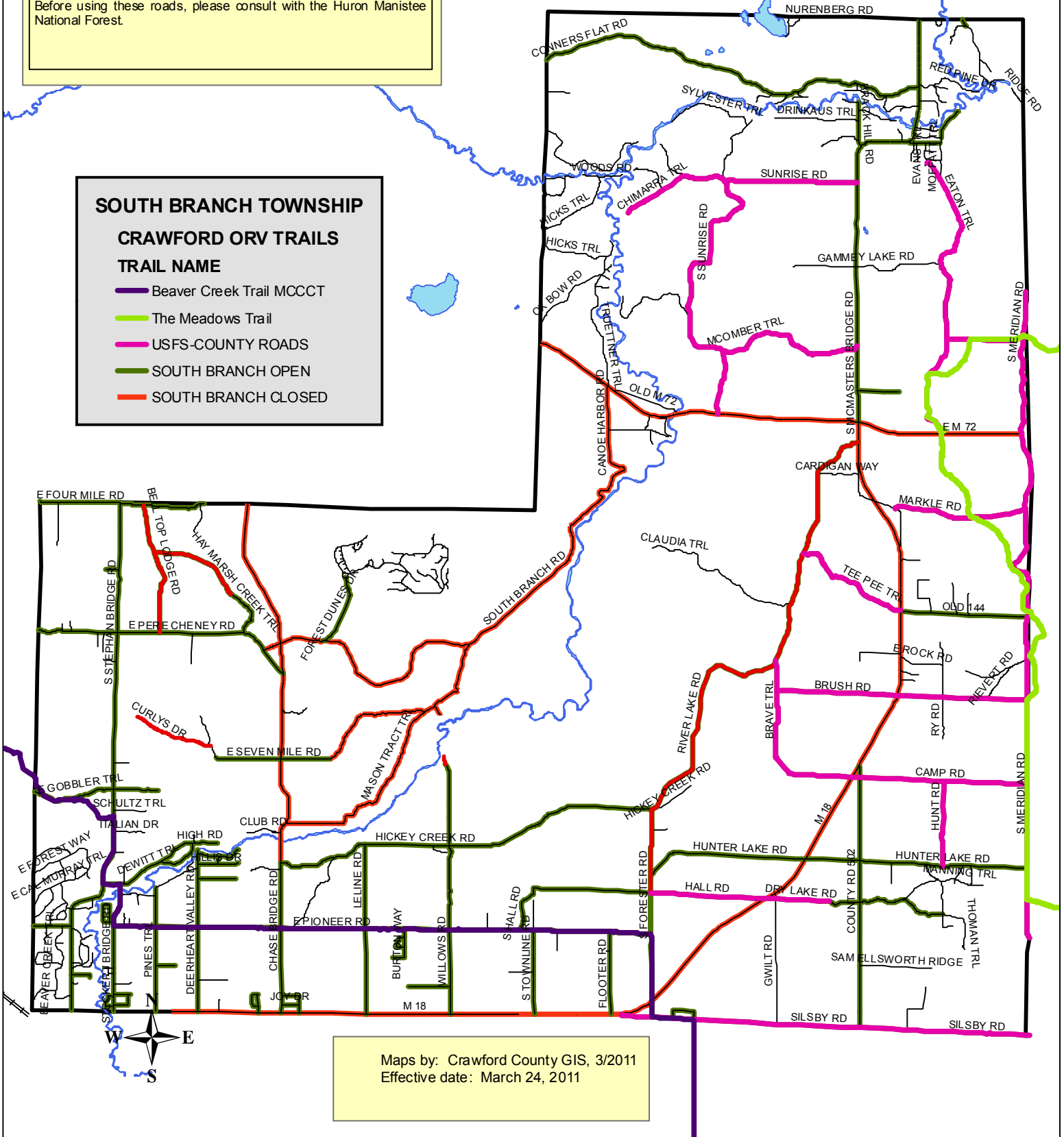
Roads colored in pink are located in Huron Manistee National Forest. While these roads are open under the Crawford County ORV Ordinance, they may be closed under Federal Regulations/Order. Before using these roads, please consult with the Huron Manistee National Forest.

SOUTH BRANCH TOWNSHIP

CRAWFORD ORV TRAILS

TRAIL NAME

- Beaver Creek Trail MCCCT
- The Meadows Trail
- USFS-COUNTY ROADS
- SOUTH BRANCH OPEN
- SOUTH BRANCH CLOSED



Maps by: Crawford County GIS, 3/2011
Effective date: March 24, 2011